

PROJECT BY :



<https://gujrera.gujarat.gov.in> | PR/GJ/AHMEDABAD/AHMEDABAD CITY/AUDA/CAA06427/061219

**SITE ADDRESS:**  
Shree Sarju Arena, Opp. Kadi Nagarik Bank,  
Behind Satymev Hospital, New Chandkheda, Ahmedabad.

**CONTACT NO :**  
+ 91 9510254656  
+ 91 9898400407

Design By:  TPC Visuals | 098983 71717  
Print By:  Sarju Arena | 91 9879 000 957  
www.shreesarju.com

॥ श्री ॥  
**SARJU ARENA**  
Retail Shops & Offices



ARTISTIC IMPRESSION



- MEDICAL STORE
- JEWELLERY
- GIFT ARTICLES
- BOOK STORE

- SUPER MARKET
- RESTAURANT
- FAST FOOD
- COFFEE SHOP



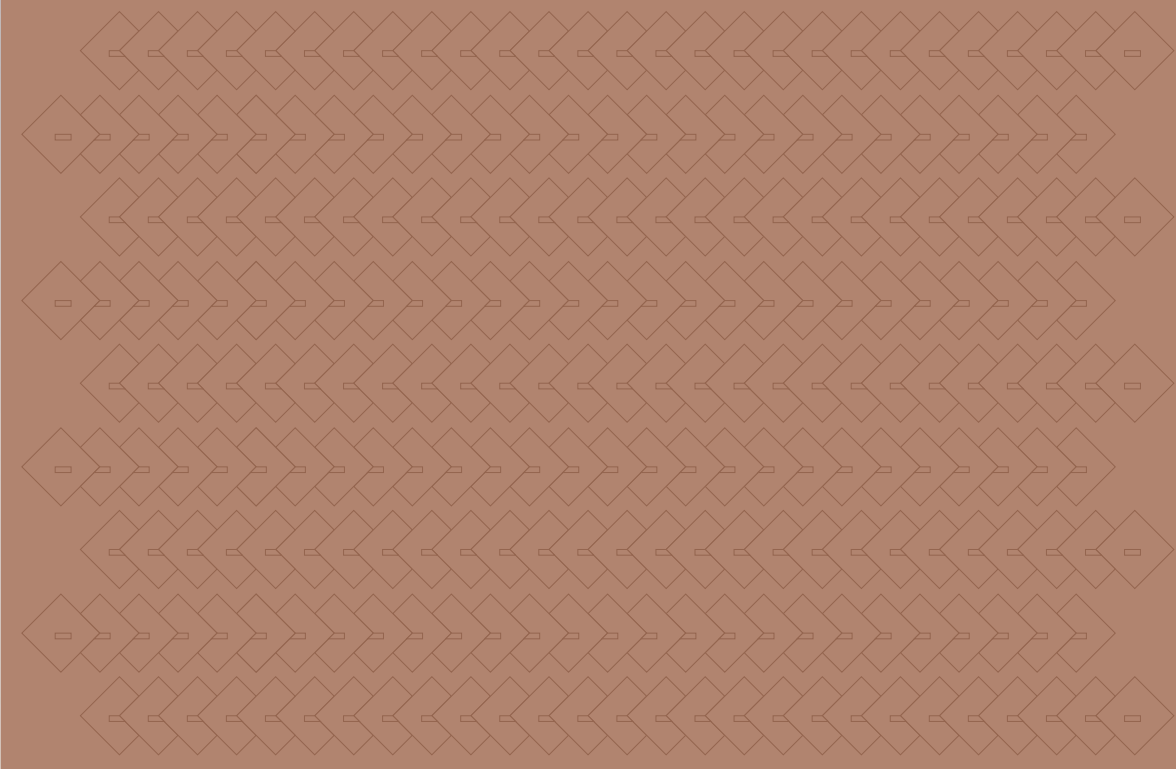
- OFFICES
- CONFERENCE HALL
- CORPORATE
- BUSINESS SPACE







ARTISTIC IMPRESSION



## ENCHANTING DESIGN THAT EXHIBITS SUPREME STATUS

The Facade Reflects Different Hues In The Sky Adding A Sparkle to Ahmedabad's Skyline. This Spectacular And Magnificent Structure Exudes Sophistication, Vibrancy And Dynamism.



HOME DECORE



RETAIL SHOP



GIFT SHOP

## INDULGE INTO EXHILARATING SHOPPING EXPERIENCE

Vibrant Location And Sparking Ambience Of Shree Sarju Arena Space Makes It An Exciting Destination For Fun, Food And Fashion. Here The Old Cliche, 'Shop Till You Drop' Actually Comes alive.



OFFICES



BUSINESS SPACE



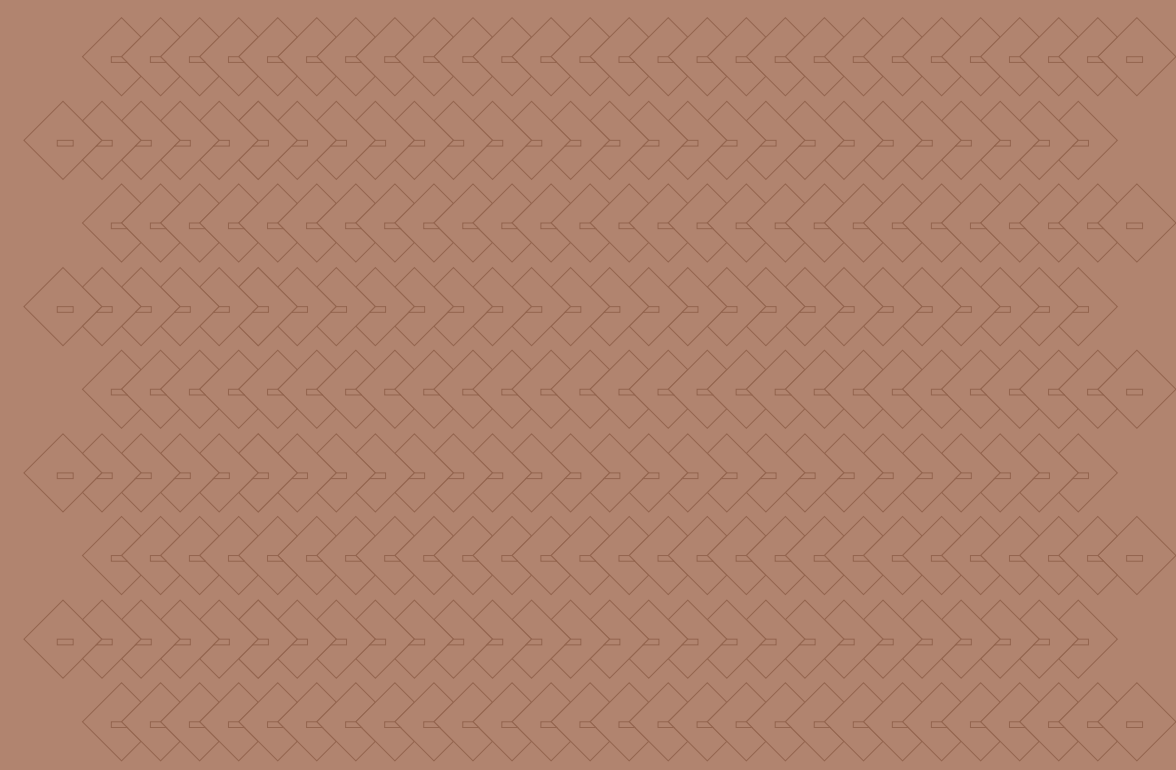
MEETING ROOM



ARTISTIC IMPRESSION



ARTISTIC IMPRESSION



## DESTINATION BUSINESS- AN ULTIMATE TERMINUS TO SET SUCCESSFUL TRADE

Presenting a precious ray of light to your absolutely Success oriented business, SHREE SARJU ARENA, A place to initiate, evolve & elevate your Business.



RESTAURANT



CAFETERIA



FOOD COURT

GROUND FLOOR



FIRST FLOOR





SECOND FLOOR



THIRD FLOOR



FOURTH FLOOR



FIFTH FLOOR





# CUSTOM MADE SPACE FOR EVERY BUSINESS NEED

Not all size fits all. Some businesses don't need too much space. While some need the whole floor space for all the departments to be housed under one roof. Whatever your business needs or requirements are; we have all the sizes for you to pick out.



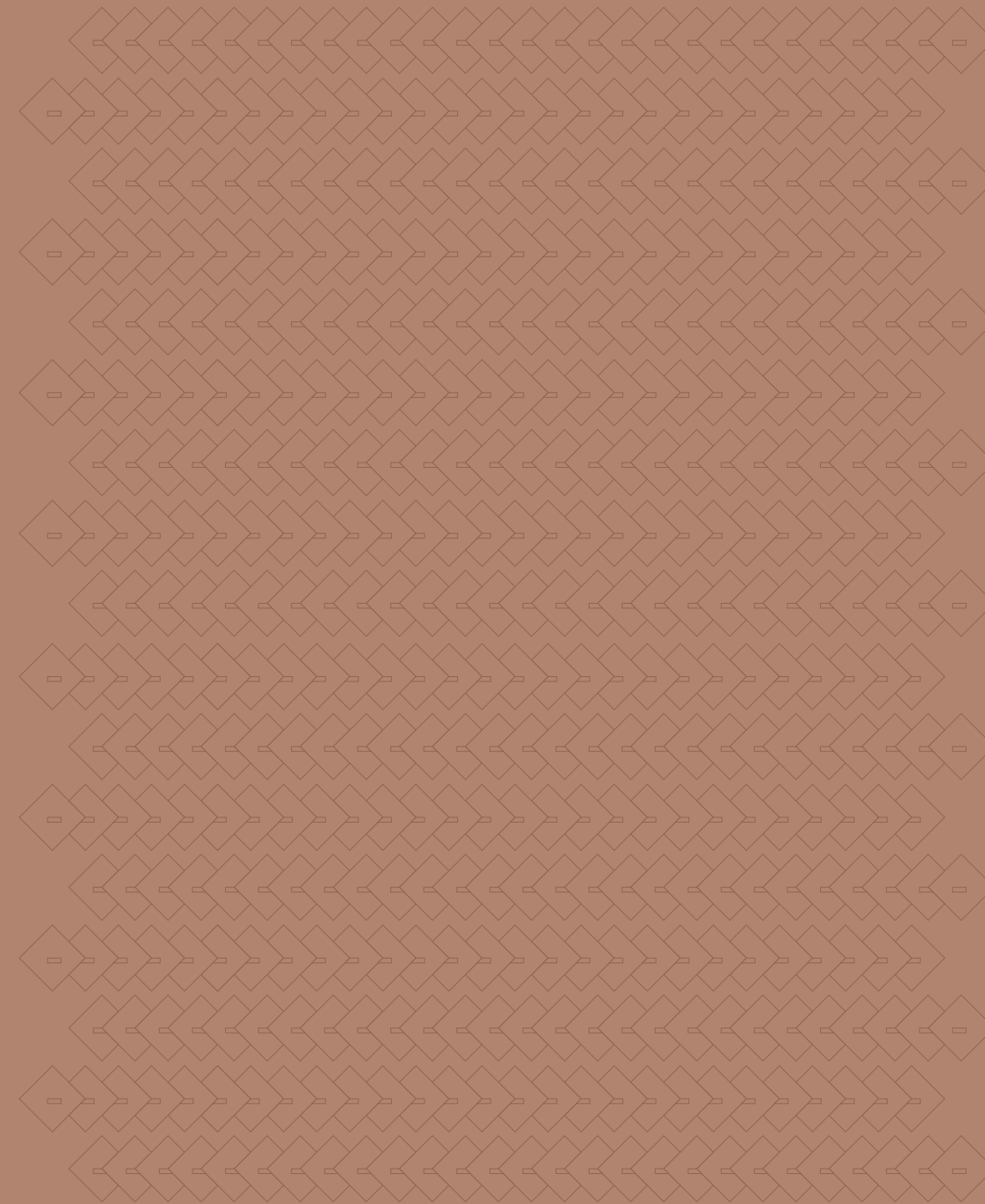


## Specifications

- **Flooring** : standard quality vitrified tiles.
- **Toilets** : decorative glazed tiles up to slab level with quality Bathroom fittings.
- **Windows** : aluminum sliding window.
- **Lift** : high speed lift with auto door.
- **Electrification** : concealed electrification with sufficient point with modular switches.
- **Finishes** : outside texture finish with water repellent color inside putty finishes.

## Salient features

- Two basement parking to fulfil the parking needs.
- Building is planned and designed as per new GDCR.
- Special attention to the earthquake resistant structural design.
- Generator backup for common utilities.
- Strictly followed the fire safety norms as per government and safety guide lines, fire sprinkler system and equipment, panic alarm on each floor including basement.
- CCTV system for security.
- Wide passages and lobbies as per norms with proper natural lights.
- Decorative lights on building to enlight the features of the building at night.
- Sufficient size of lift's placed as per norms including streture lift.
- Exclusive grand entry.
- High end elevation with treated architectural features.
- Decorative common lightings.



ARCHITECT :



FACADE ARCHITECT :



VASTU CONSULTANT :



STRUCTURAL :



NOTE : • GEB, AUDA, Maintenance Charges & all other Govt. taxes to be borne by the members. • This brochure is just a representation of the project. • The dimension shown in the brochure are as per area approximately. • Irregular payment will automatically ensure cancellation of the booking. • If the member desires to make internal modification of any kind in the planning of each unit, such changes will only be done with the express permission of the developers. • The developer reserves all rights to change or to make any modification. • Subject to Gandhinagar jurisdiction. • Payment in favour of SHREE SARJU INFRACON LLP



॥ श्री ॥

SARJU ARENA

SCAN FOR LOCATION

